

The image shows a modern interior space, likely a hotel suite. On the left, a tall, cylindrical lamp with a white, perforated, lattice-like pattern glows from within. The wall behind it is a textured, light-colored surface. Three framed black and white photographs are mounted on the wall. In the foreground, a dark grey armchair with a light grey fabric backrest sits on a patterned rug. To the right, a dark wooden desk holds a lamp with a bright yellow rectangular shade. The floor is dark wood.

SO/BERLIN *Das Stue*

STUE SUITES  
PENTHOUSE SUITE & BEL ETAGE SUITE

# SO/ BERLIN Das Stue

## OUR STUE SUITES



„SO/ BERLIN DAS STUE IS A PLACE WHERE QUALITY, PROVENANCE AND CONTEMPORARY DESIGN COME TOGETHER. IT EXUDES A REMARKABLY INTIMATE FEEL – LIKE THE LUXURIOUS LIVING ROOM OF FRIENDS.‘

PATRICIA URQUIOLA

These generously sized Suites, with sizes of 70 m<sup>2</sup> and five metre high ceilings, are an ideal place to relax, regenerate and awake new energies. Some offer beautiful views of the peaceful Tiergarten. All Suites in this category are equipped with a rain shower and a bathtub, a relaxing lounge area and a desk. Also, original photos from André Rival are on view. Here long days of sightseeing or work harmoniously melt away.

- 70 m<sup>2</sup> (750ft<sup>2</sup>)
- extra long king-sized bed
- view of Tiergarten park
- free Wi-Fi
- lounge area
- 5 meter high ceilings
- rain shower and bathtub
- complimentary minibar

- air conditioning
- complimentary laundry service on day of arrival
- desk
- Ultra-HD entertainment system
- electronic safe
- spacious walk-in closet
- Nespresso machine
- tea variation

SO/ BERLIN *Das Stue*

## OUR PENTHOUSE SUITES



„THINK OF CARY GRANT, BAR CULTURE, REAL GENTLEMEN & LADIES AND CULTIVATED CONVERSATIONS. SO/ BERLIN DAS STUE IS A CELEBRATION OF SOCIALIZING‘

### WALLPAPER

The Penthouse Suite is located on the fifth and thus highest floor of the hotel. It has separate sleeping and living areas. With a total area of about 80m<sup>2</sup> (861ft<sup>2</sup>) it is the ideal place to relax, be rejuvenated and experience the unique atmosphere of the SO/ Berlin Das Stue. The floor-to-ceiling panoramic windows offer views of the peaceful Tiergarten Park to one side, and of the antelopes and ostriches of the Zoo Berlin to the other. The large terrace is the perfect place to unwind after a long day of sightseeing or working. The Penthouse Suite is equipped with an extra-long bed (210cm) and 2 bathrooms.

- 80m<sup>2</sup> (861ft<sup>2</sup>)
- terrace 30m<sup>2</sup> (322ft<sup>2</sup>)
- view of Tiergarten park
- complimentary breakfast
- complimentary minibar
- welcome bar
- King-Sized bed
- free Wi-Fi
- free use of pool and sauna
- separate living and sleeping area

- air conditioning
- 2 bathrooms with rain shower
- Nespresso machine
- desk
- Parrot sound system
- Ultra-HD entertainment system and 60 inch screen
- electronic safe
- spacious closet with outlet

# SO/ BERLIN Das Stue

## OUR BEL ETAGE SUITE



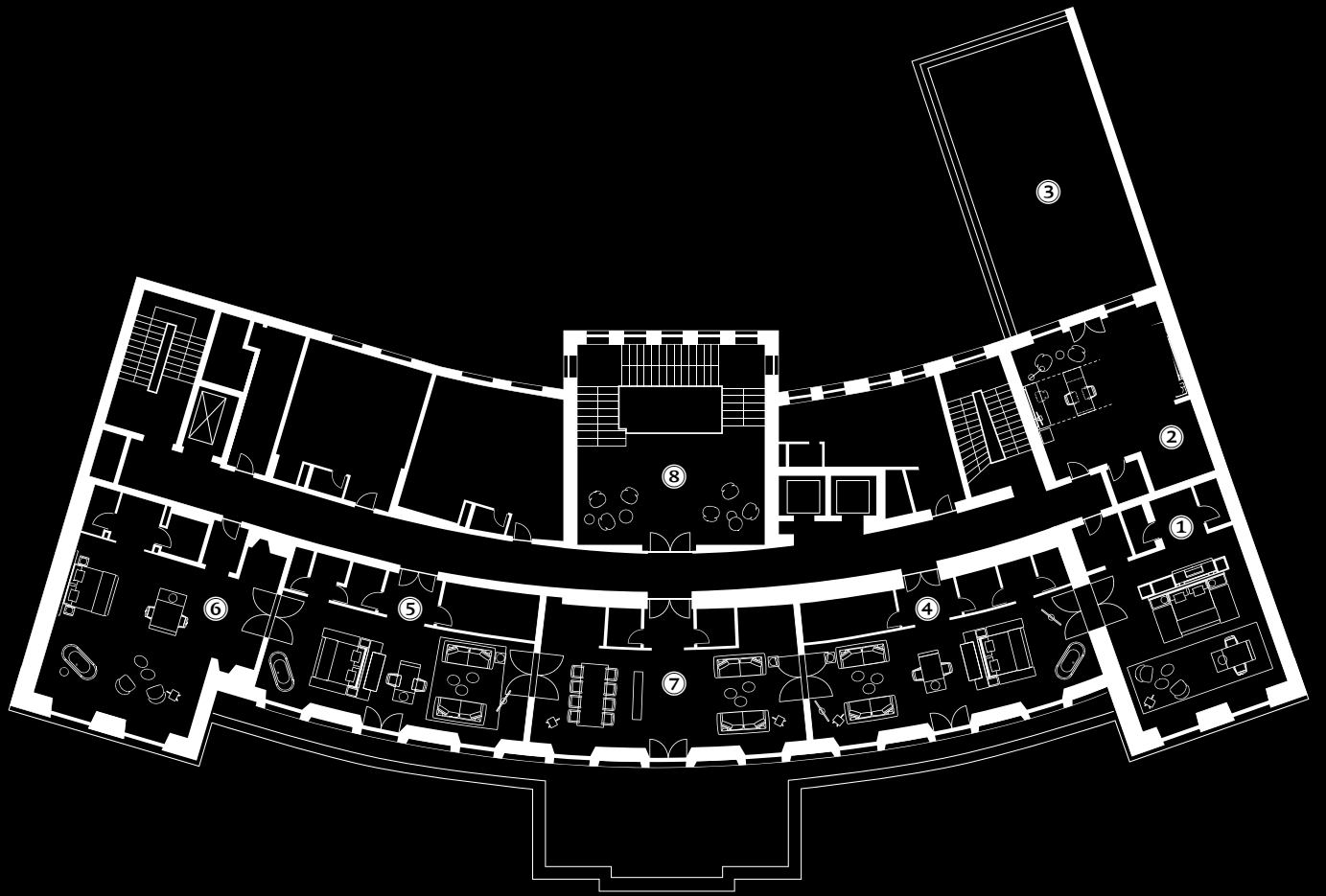
„SO/ BERLIN DAS STUE‘S INTIMATE SCALE AND DISCREET LOCATION, COUPLED WITH ITS GENEROUSLY SIZED ROOMS, HAVE INSTANTLY PUT IT AT THE TOP OF THE PILE ‘

### CONDÉ NAST TRAVELLER

This is the hotels largest suite with separate living and sleeping areas. It is an ideal place to relax, regenerate and enjoy the unique atmosphere of SO/ Berlin Das Stue. Relax with views of the peaceful Tiergarten or observe the animals in the Zoo Berlin from the large terrace.

The suite is equipped with two bathrooms, and displays contemporary photos by André Rival. Booking this suite at full rate entitles you to complimentary use of an Audi limousine or sports car.

- 110m<sup>2</sup> (1185ft<sup>2</sup>)
- terrace 80m<sup>2</sup> (861ft<sup>2</sup>)
- welcome bar
- complimentary breakfast
- complimentary minibar
- complimentary limousine transfer for up to 3 persons from and to the airport upon request
- extra long King-sized bed
- free Wi-Fi
- air conditioning
- 5 meter high ceilings
- 2 bathrooms with rain shower and bathtub
- Nespresso machines
- complimentary laundry service on the arrival day
- desk
- Ultra-HD entertainment system with 60 inch screen
- electronic safe
- spacious walk-in closet
- tea variation



### BEL ETAGE SUITE

- ① Bedroom
- ② Living Room
- ③ Terrace

### STUE SUITES

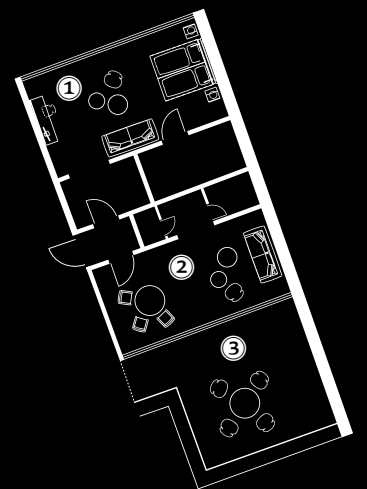
- ④ ROOM N° 208
- ⑤ ROOM N° 216
- ⑥ ROOM N° 220

- ⑦ Bel Etage Salon
- ⑧ Library

All three Stue Suites can be combined together and connected with the Bel Etage Suite and Bel Etage Salon, all adding up to a total area of almost 400m<sup>2</sup>.

### PENTHOUSE SUITE

- ① Bedroom
- ② Living Room
- ③ Terrace



SO/BERLIN *Das Stue*